



USAID
FROM THE AMERICAN PEOPLE

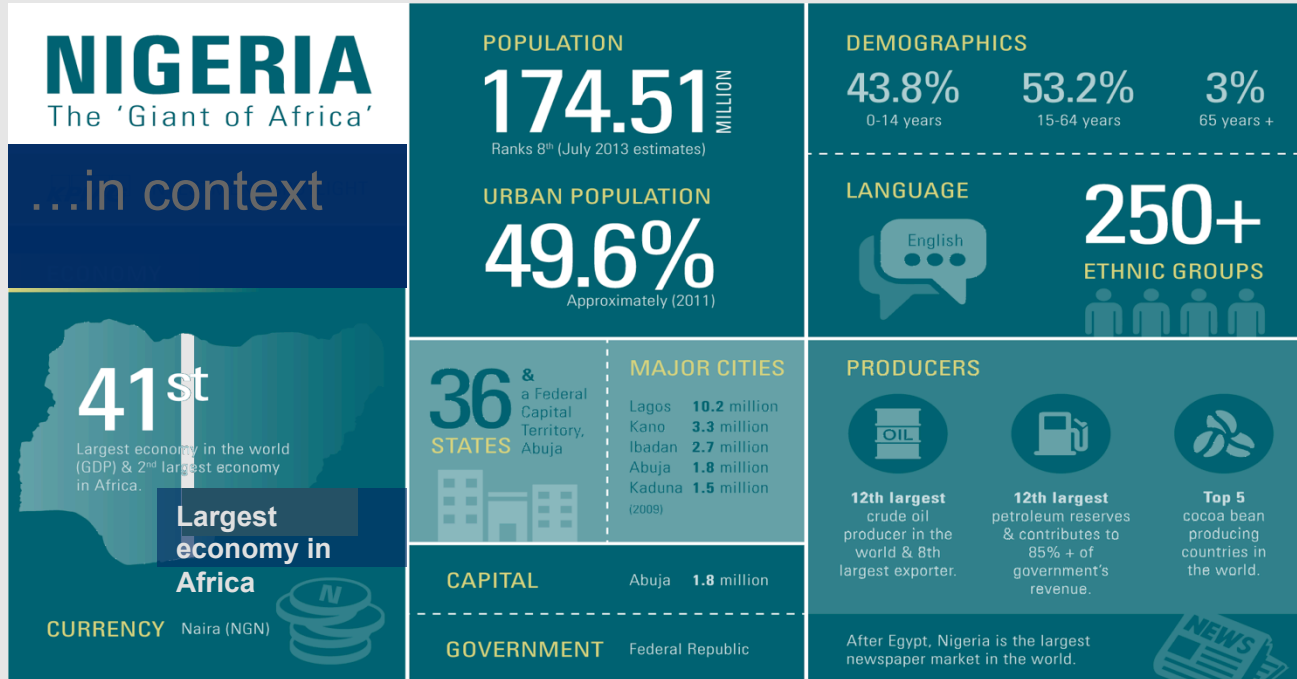
LEAR  **nigeria**[®]

Beginning with the end in mind: Citizen-led Assessments in Nigeria

Modupe Adefeso-Olateju, PhD.
2015 Global Education Summit



Nigeria in context



1 in 5 out of school children globally, some **10.5m children** are Nigerian... And those who are in school are learning little.

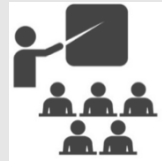
Nigeria in context



- Nigeria's future depends on the productive capacity of its people, not oil



- Multi-level crisis in Nigeria's education system, but weal warning systems to guide interventions and inform policy making



- Non-state actors and ordinary citizens have an important role to play in improving education policy and outcomes

Early grade assessments help shift focus from enrolment, grade progression, certifications to competencies and capabilities



- Not a replacement of other early grade learning assessments



- Public Private collaboration that enhances shared commitment to quality education



- Helps in the collection of data on household indicators that impact on learning



- Assesses all children – including out of school and those in non-formal schools

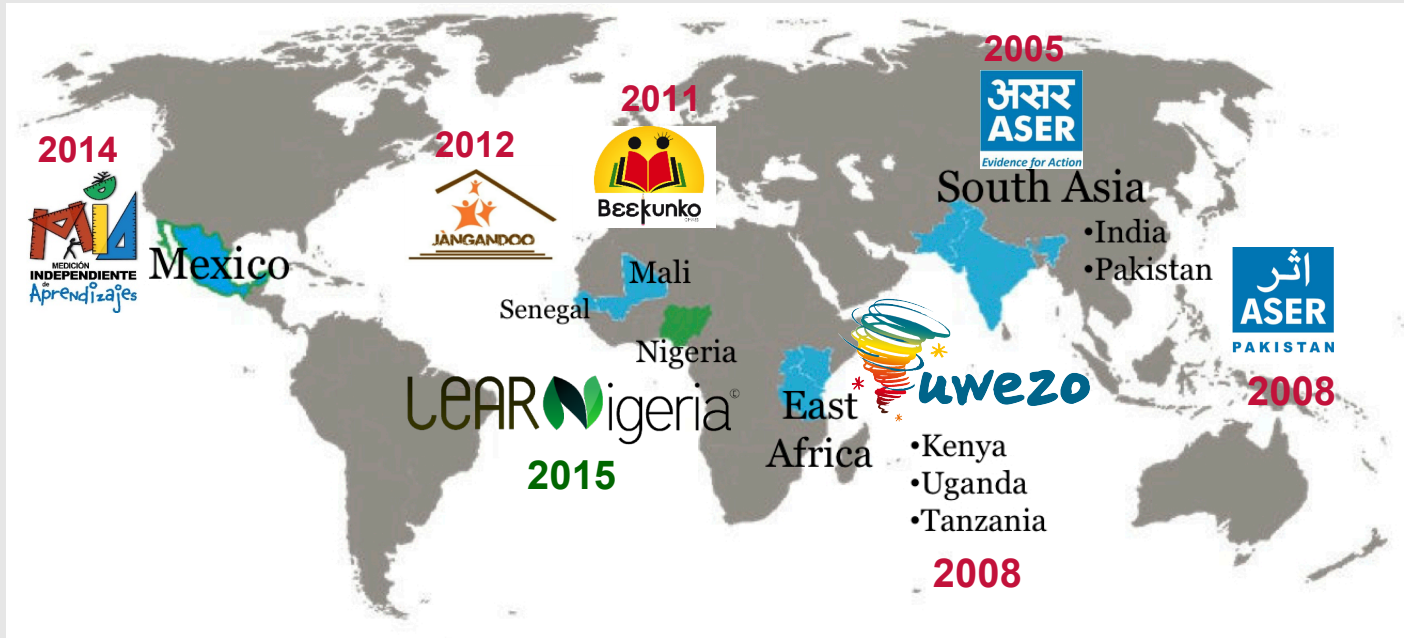


- Low cost early warning system that promotes volunteerism, and develops a critical mass of cross-sector, informed and empowered education activists

Methodology of the Citizen-led Assessment

• Low cost	Low cost model powered by volunteers
• Household based	Conducted in households, and includes collection of household indicators
• One to one	Orally administered individualized survey
• Simple	Simple and easily administered tools
• Citizen-led	Parents, guardians, religious leaders are actively engaged in the process
• Instant feedback	Parents / guardians receive feedback
• Inclusive	Includes school surveys
• Multi-sectoral	Collective and collaborative effort with all relevant stakeholders

Citizen-led Assessments Globally



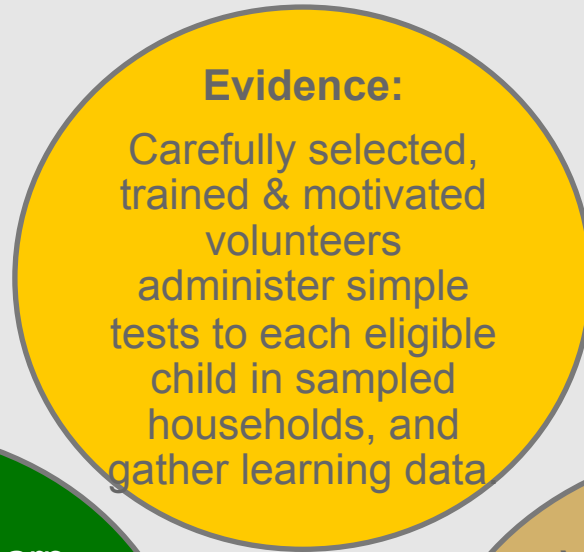
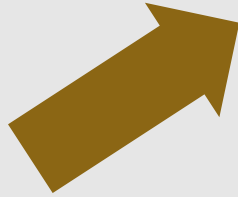
- **10** years
- **40** assessments
- **7.5** million children tested
- **30** languages
- **600,000** volunteers

Nigeria is the 9th country to join the Peoples Action for Learning Network

Citizen-led assessments: 2014 at-a-glance

Country	Districts	EAs / Villages	HHs Visited	Children Assessed	Schools Visited	Volunteers Involved	Lang Tested
India (R)	577	16,497	341,070	569,229	15,206	32,994	20
Pakistan (R&U)	165	4,698	93,093	279,427	6,235	9,396	3
Kenya	158	4,521	62,089	135,109	4,441	9,300	2
Tanzania	133	3,930	78,600	104,000	3,688	8,253	2
Uganda	80	2,372	34,013	87,339	2,353	4,800	5
Mali (2013)	216	1080	21,251	227,689	2,259	975	7
Senegal	14 (regions)	220	9,928	26,014	856	450	2
Mexico	21 (Veracruz)	187	2,400	3,100	187	480	3
TOTAL	1,364	33,505	642,444	1,431,907	35,225	66,648	44

Nigeria: theory of change



LEARNigeria: Early days but a promising start

- Pre-tests successfully carried out as a public private partnership
- **4 Local Governments** surveyed (urban and rural)
- Over **17** public, private and civil society organisations, and **25 volunteers** involved in test development, field testing, and administration of data collection instruments;
- Parents/Guardians irrespective of educational or economic status are interested in quality of education
- Community engagement is key in promoting education in a culturally and religiously diverse country like Nigeria



[LEARNigeria in Action \(video\)](#)



Thank you

@tepcentre